

RESPONDING TO TODAY'S DEMANDS

PLANNING FOR TOMORROW'S CHALLENGES

C/Supt Luke Collison
C/Insp Simon Anslow

A typical day

- On an average day in Southend, Essex Police:
- records 128 incidents and responds to 42 emergency & priority calls, 12 of which are domestic abuse incidents.
- records 42 crimes of which 11 are violent crimes
- responds to 3 incidents with people experiencing mental health issues
- attends 3 road traffic collisions where there are casualties
- responds to around 4 reports of a missing person. At least two of those will be children. The person might be found in hours or it may take days, weeks or months of work.

Announcement of plans on 6 October 2015

- Proposed shape of local policing
- Essex Police property estate
- Contact between public and police
- *Major IT transformation*
- Formal consultation with affected staff
- Engagement with public and stakeholders

Financial context

- Essex Police is anticipating cuts of around £33 million by 2019-20, on a budget of around £262 million
- More detail from Home Office later in December
- Greater flexibility for precept rise
- Around 83 per cent of the budget is spent on the salaries of police officers, PCSOs and police staff
- £1 million pays for 20 police constables for a year

Policing context

- Crime is changing and Essex Police has to change
- Essex Police has to be leaner but wants to be smarter
- Essex Police will take even more account of risk and the vulnerability of victims
- It is police officers that solve crimes, not buildings
- Local policing will change but Community Policing Teams will serve all communities

Our desire to change

- To make the Essex Police property estate fit for the future
- To improve public contact between police and the communities we serve
- To improve the efficiency and effectiveness of policing

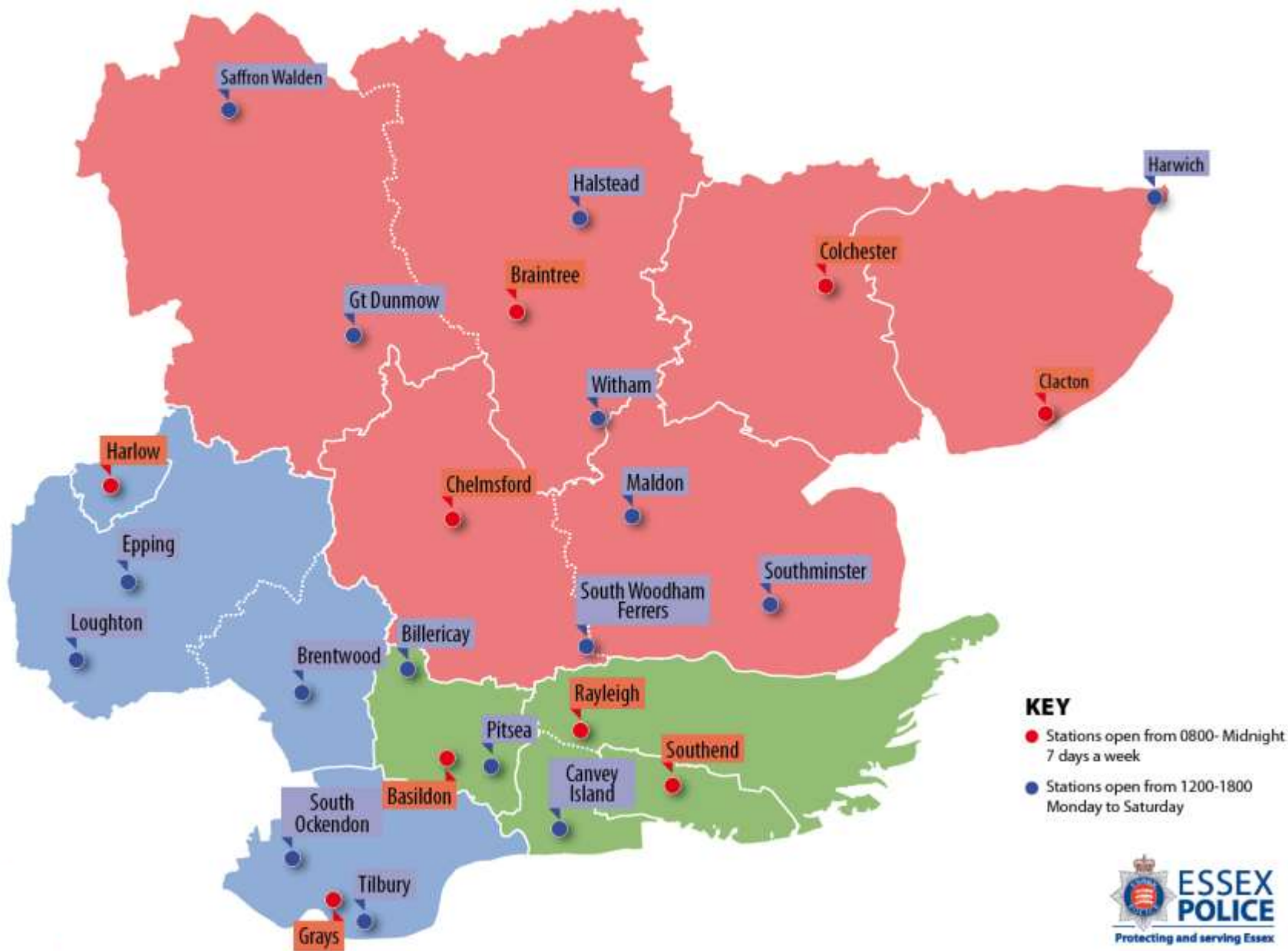
Police buildings

- Essex Police needs modern fit for purpose accommodation in the right locations to meet the challenges of policing for the next 20 years.
- Essex Police's 80 buildings require £30 million of maintenance work to bring up to standard and expenditure of almost £2 million a year just to maintain the current condition, and most are inefficient.
- Based on careful analysis the proposal is to reduce the estate to 30 buildings strategically placed around Essex.

Estate strategy key principles

- Ensuring operational policing bases are in the right location
- Ensuring appropriate front counter provision, with locations determined by footfall and geography
- Ensuring police custody facilities are in the right place across the county
- A flexible, modern, approach to public contact

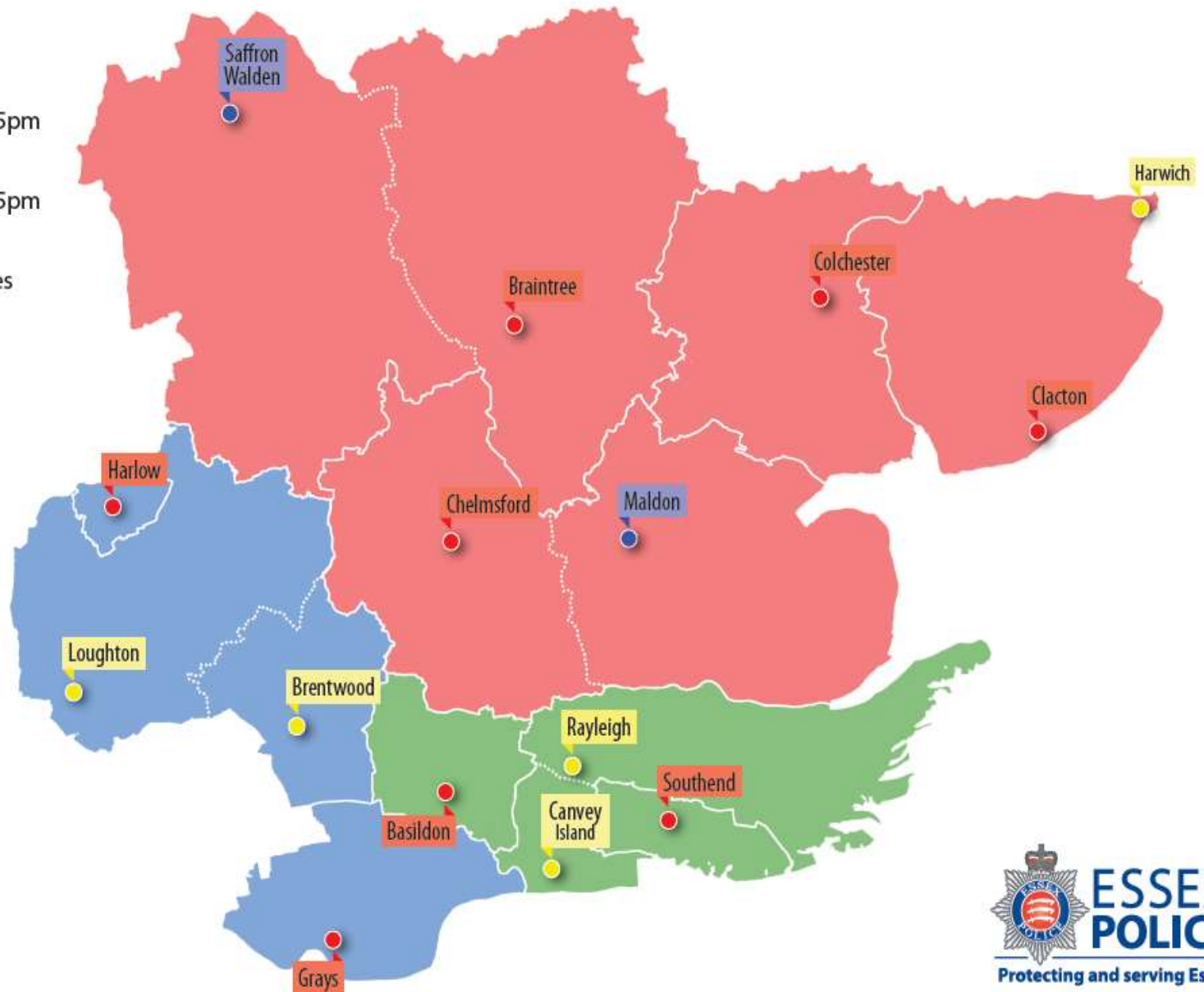
Current police station front counter opening hours (August 2015)



Proposed police station front counter opening hours from April 2016, plus remaining operational bases

KEY

- Stations open from 9am to 5pm Monday - Sunday
- Stations open from 9am to 5pm Monday to Friday
- Remaining operational bases (no front counters)



Public contact

- Research shows that most people would prefer to contact Essex Police by phone or via the internet rather than attending a police station
- Very few people come into police stations to report crime
- The public will still be able to contact Essex Police by an improved phone service, but by April 2016 people will be able to contact and report crime online
- Through this autumn's public engagement programme, other ways of delivering face-to-face contact with Essex Police will be explored

Public contact - by April 2016 you will be able to:

- Report crime online on the Essex Police website
- Register and search for lost / found property online
- Use the Essex Police website to be directed more accurately and easily to partner agencies for matters that are primarily their responsibility

The current challenges

- Changing crime types
- Financial cuts
- Technology and how we live our lives
- The consequence of this is that policing has to change

What this means for local policing

- There will be fewer police officers and PCSOs on our streets, and they need to be increasingly intelligence-led. Patrolling will be targeted such as emerging hot spot areas
- Essex Police must stay connected with the communities of our county
- Ten Community Policing Teams, one in each District Policing Area, based in Community Safety Hubs, will work closely with partners

Local Policing Teams in each District Policing Area

- Community Policing Teams engaged in local problem solving
- 24/7 Response teams dealing with 999 emergency calls and crime
- CID teams investigating serious crimes
- Specialist domestic abuse (Juno) teams
- Targeting of offenders who cause the most harm

Community Policing Teams

- Problem solving around emerging crime series / hotspots, including high risk or repeat ASB
- Working with partners to address local issues
- Supporting the most vulnerable victims
- Managing the night time economy
- Engaging with local communities

Proposed Community Safety Hubs

- Each Community Policing Team will be led by an Inspector and Sergeant, with Police Constables and PCSOs
- Co-located/ working closely with partners
- Local problem solving including identifying high risk and repeat victims
- Community Policing Teams will include Youth Officers, Licensing Officers, Crime Prevention Officers

Impact on PCSOs and police staff of proposals

- Essex Police currently has 250 PCSOs. It is proposed that there will be 60 PCSOs, flexibly deployed across each of the 10 Community Policing Teams across Essex
- Essex Police currently has 98 posts for front counter staff. It is proposed that there will be 36 posts for staff working on the 10 remaining front counters

Closing thoughts

- These changes are driven by both the changing nature of crime and financial challenges
- The Chief Constable and PCC are determined that Essex Police will continue to keep our county safe both now and for the future
- Everyone is encouraged to join this autumn's engagement programme to raise local issues and potential solutions with Essex Police
- Effective partnership work will become increasingly important

Questions

Today's demand Tomorrow's challenge's

Southend Crime

Good news:

- Anti-social behaviour incidents have reduced by 11% (-554) in the last 12 months.
- Vehicle crime has been reducing over the last 12 months and is showing a downward trend.

Southend Crime

Promising news:

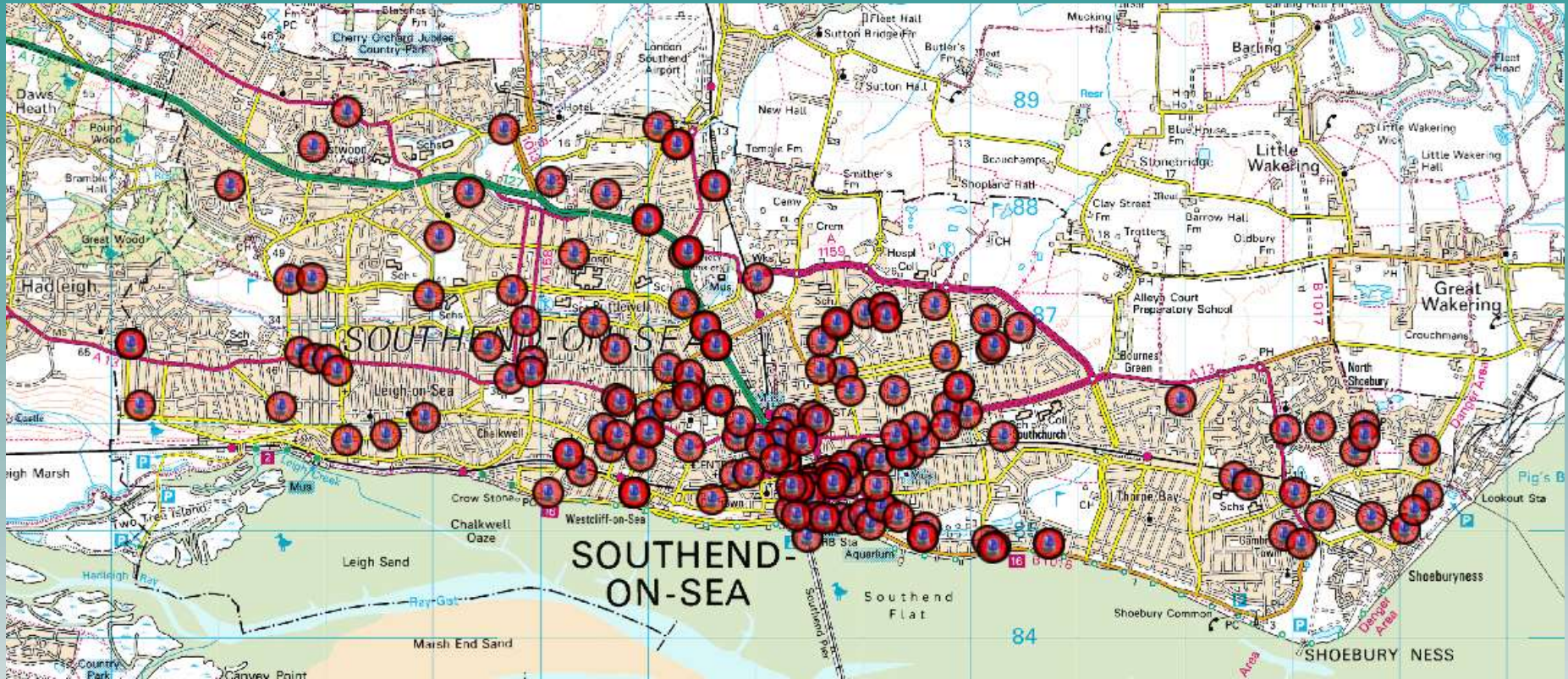
- Violence with injury (including wounding) is reducing over the last 2 months. The district is 5th in the MSG with a trend that is better than the MSG average.
- The number of domestic abuse-related violent crimes has been gradually reducing over the last 3 months.

Southend Crime

Concerning news:

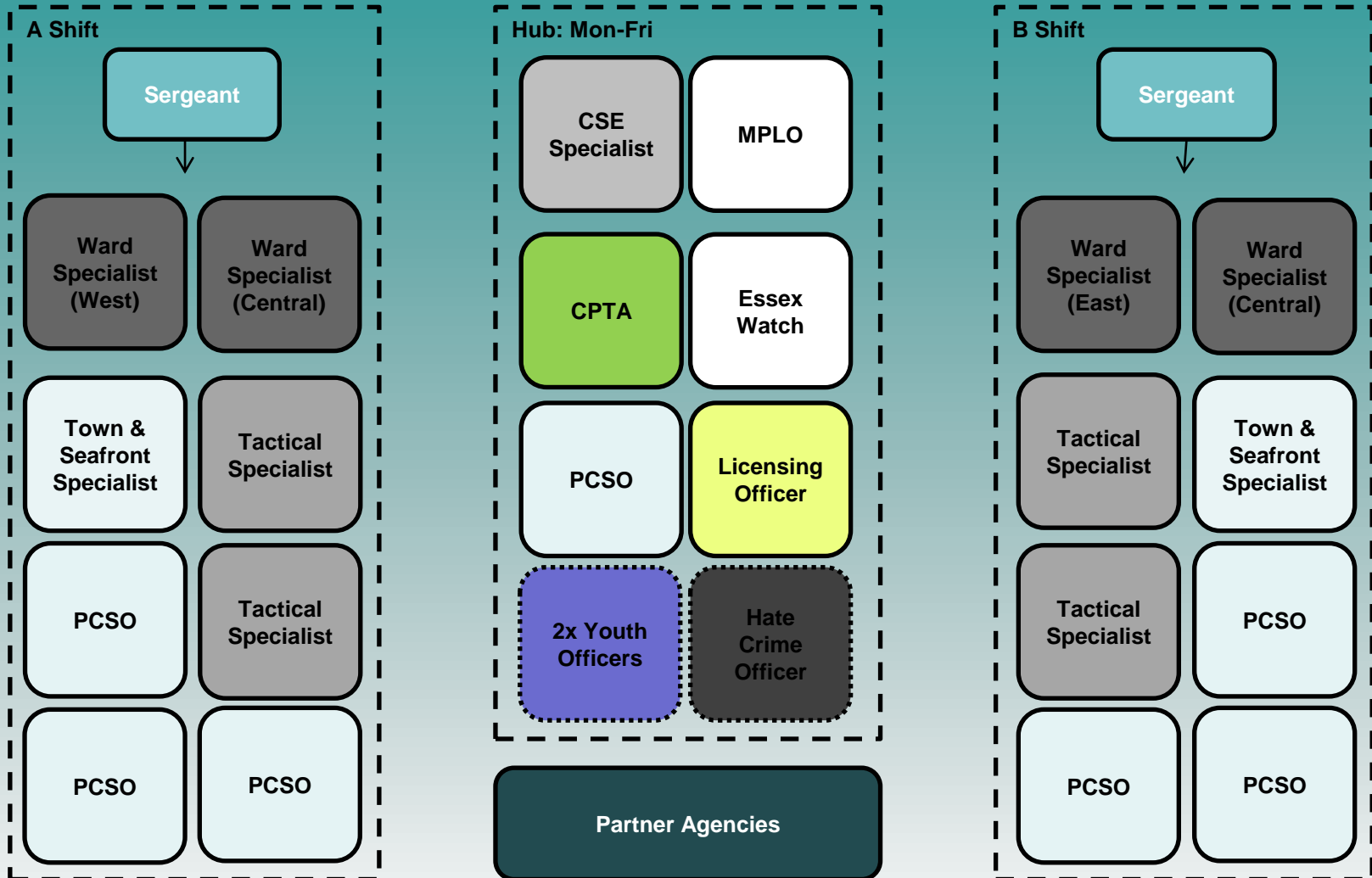
- Violence without injury reports continue to rise, up 33% for the 12mths to the end of October. We are 10th in the MSG and share the MSG trend of a sharp increase.
- Dwelling Burglary is increasing (up 18% in the last 12 mths), a trend at odds with the MSG.
- Robbery offences are increasing (up 11%), a trend that is also at odds with the MSG.

Violence Without Injury – Nov 2015



Community Policing Team

Local Policing and Partnerships Inspector



Community Policing Issues

- **Southend Travel Centre** – Town officers have been checking daily, serving Community Protection Notices and Warnings and will be bringing prosecutions.
- **Youths in Southend Town Centre** – working closely with IYSS to identify and visit. Seeking Community Behaviour Orders in relation to 2 named individuals, ABCs for others.
- **Sherwood Way** – CBO obtained for one individual, increased patrols, problems reduced.
- **Barringtons, Sutton Road** – Working with SEH to tackle problems, patrols, CPTA advice, enforcement action.